

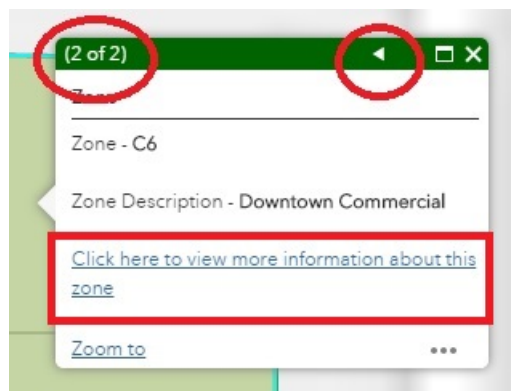
Zoning Map Application

How-to Guide

The City of Greater Sudbury is replacing the pdf zone maps on the city's website with a new online Zoning Map application. This document describes the Zoning Map tools and how they work.

To view the zone on a parcel, simply click on the map and a window will appear with the corresponding information.

There may be more than one window to scroll through as indicated at the top of the window (for example, 1 of 2). Click on the arrows to scroll through the windows.

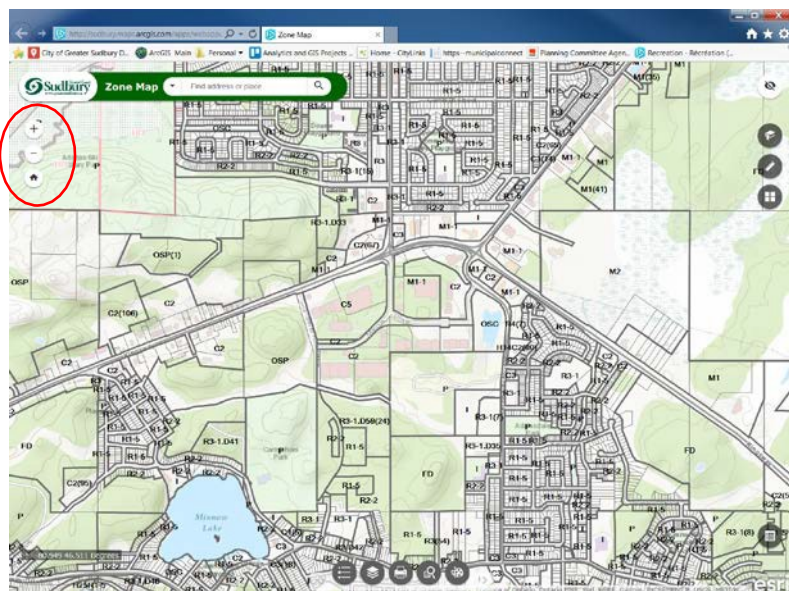
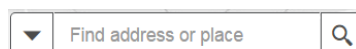


Clicking on the link to 'view more information about this zone' will bring you to information in the Zoning By-law, for example, permitted uses for that zone and any special provisions.

Map Navigation Tools

On the left side of the map, there are icons to **Zoom In** (+), **Zoom Out** (-), and go to the **Default Extent** (house icon) of the map.

There is also a **Search** field that allows you to search for a specific address or place, such as a library or school

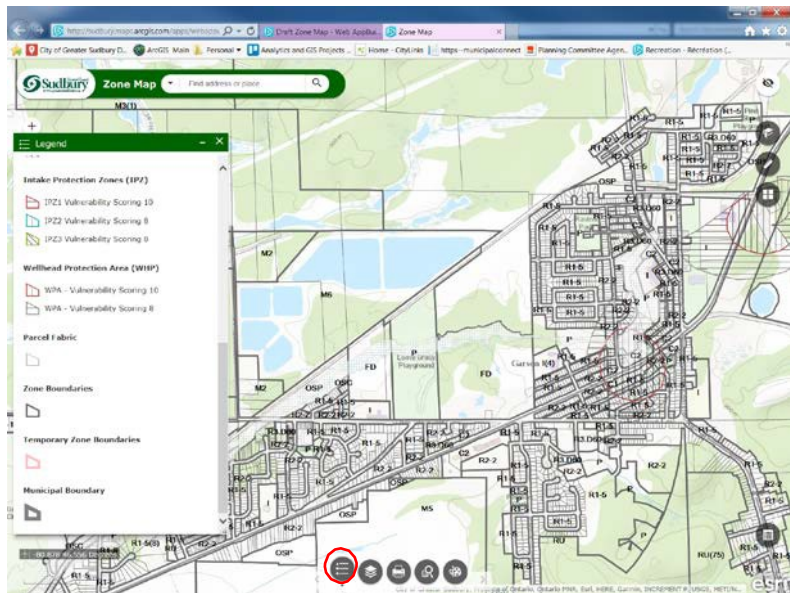


Below is a description of the icons on the bottom of the webpage.



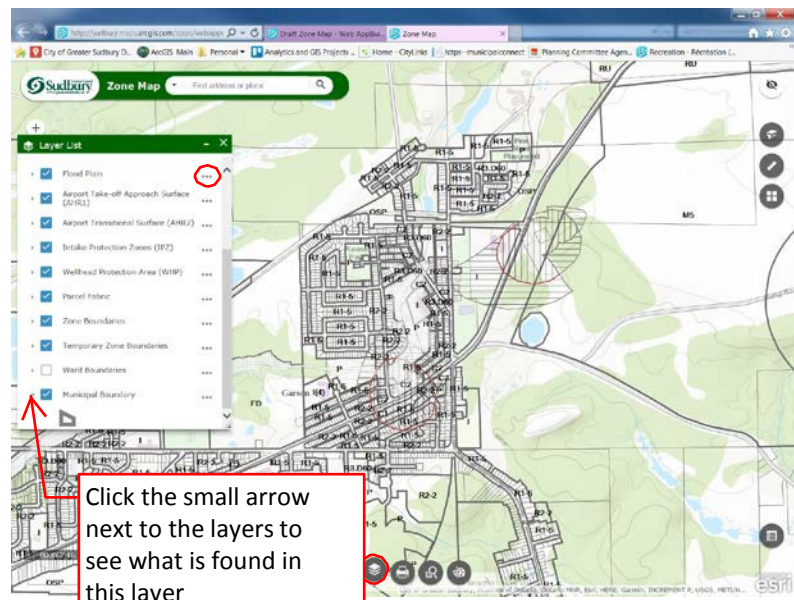
Legend – click on this icon to open the legend and to view the symbols depicted on the map.

The symbology will change in both the legend and the map as you zoom in and out.



Layer List – check or uncheck different layers depending on which information you would like displayed on the map.

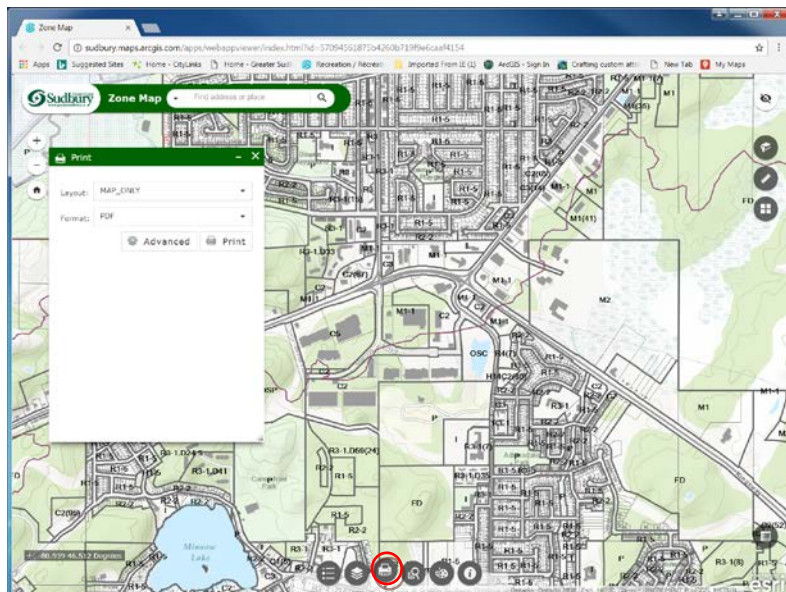
Try clicking on the '...' symbol to see the other options for each layer. For example, 'View in Attribute Table' opens a table and lists the features and its corresponding information in a table format. You can also adjust the Transparency as well as the drawing order of the layers here by clicking 'Move up' or 'Move Down'.



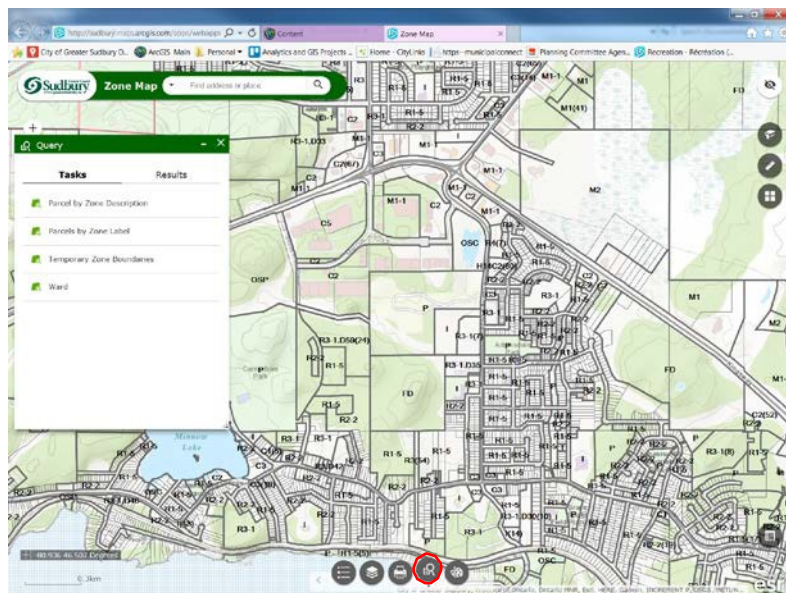



The **Printer** tool enables you to print a copy of your map. There are a variety of page size choices and both landscape and portrait orientations. A pdf will be created, which can be opened and printed, as well as saved for future use.

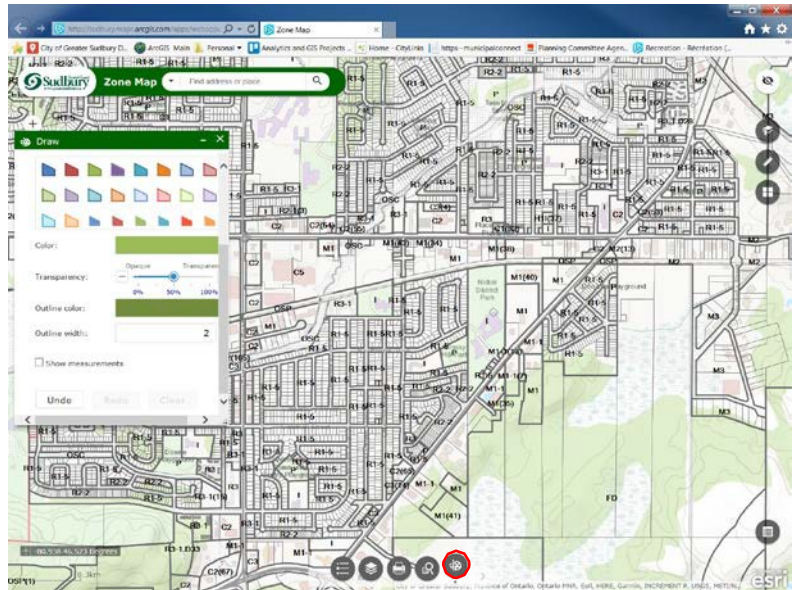
Note: If a large geographic area is desired, the entire legend may not appear on the map due to some page size restrictions, especially the ANSI A Landscape and A4 Landscape options.



The **Map Queries** tool enables you to search for a parcel by Zone Description (eg. Rural), Zone Label (eg. RU), or a Temporary Zone (T2). For example, if you wish to search for all the Downtown Commercially zoned parcels, click on Parcel by Zone Description, select the spatial filter of the area you would like to search, and click on the Apply button. A list of parcels zoned Downtown Commercial (C6) is displayed and all the sites are highlighted. To zoom to a specific parcel, click on the name in this list, and it will bring you to that location. Alternatively, pan around the map and click on the desired highlighted parcel to display a pop-up window with information on that parcel.




The **Draw tool**  allows you to create graphics that display on the map. It can optionally add line distance or polygon area to the feature as text.

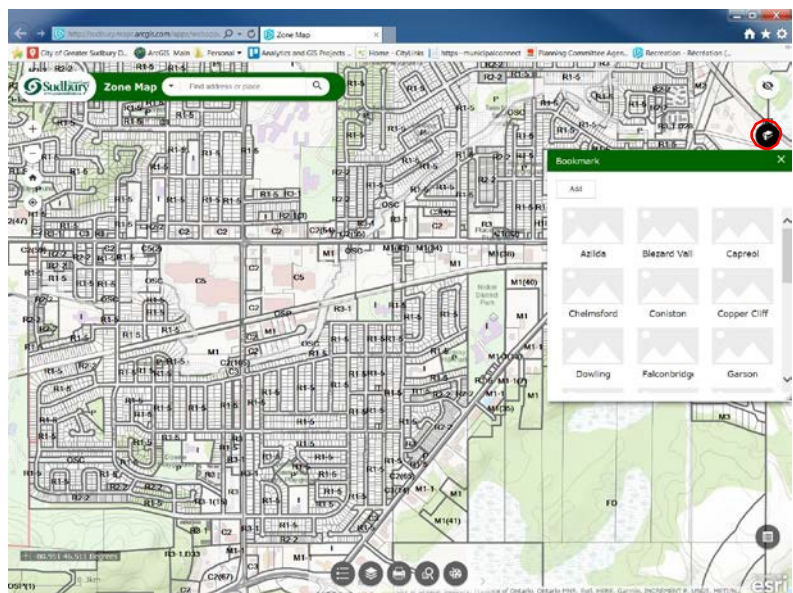


Below is a description of the icons on the right margin of the webpage.



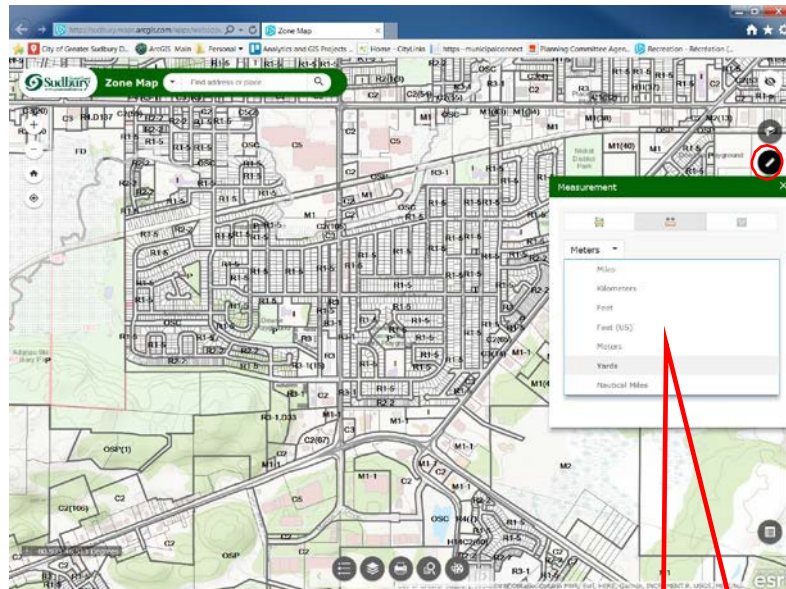
The **Bookmark** icon  allows you to zoom to one of the City's many communities e.g. Azilda, Lively, Hanmer or Sudbury.

You can also add and delete your own bookmarks for use in your view of the map as well. Zoom to the area that you want to bookmark, click on the Bookmark tool, then the Add button, and change the name of the Bookmark. For example, use the Search bar and type in your address. Zoom in to your house then create a bookmark and give it a name significant to you, such as My Place.





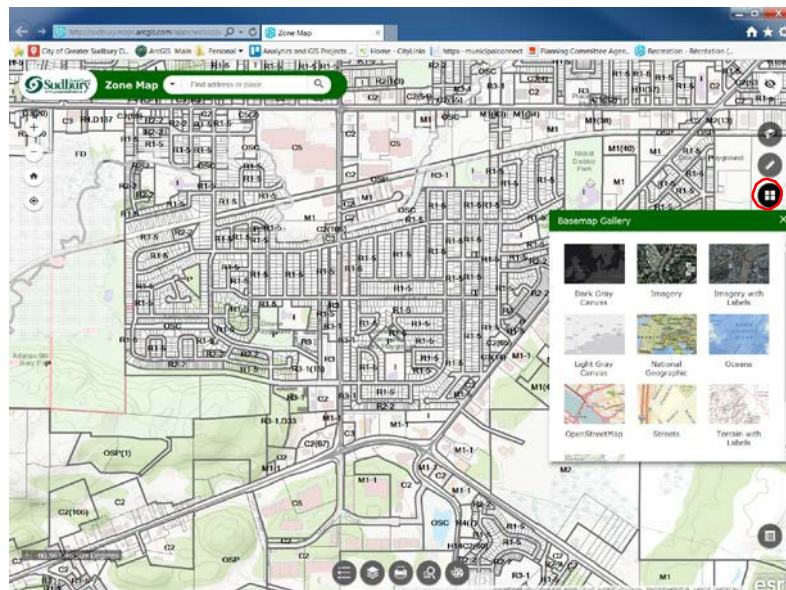
Measurement – this tool allows you to measure an area, a distance, and get a geographic location of a point in degrees or degrees, minutes, and seconds. Click on a point on the map to begin measuring.



You can choose from many unit types e.g. Sq. kilometers, Sq. meters, acres, hectares, feet etc...



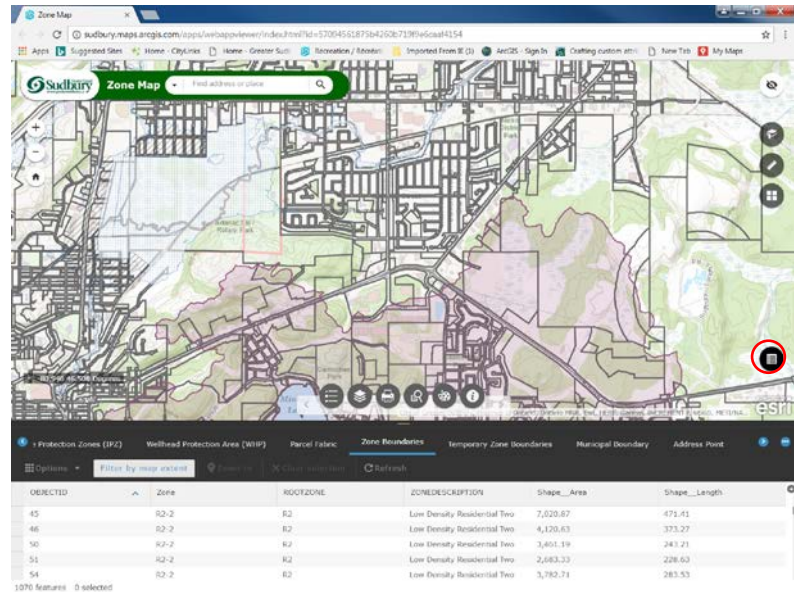
Basemap Gallery – this application has a topographic basemap as a default. If satellite imagery or another type of basemap is desired, it can be selected here





Attribute Table Tool

In the bottom right corner of the screen, click on the attribute tool to open a table showing all the fields and their values in table format. Click the symbol again to close the table.



User Guide and Contact information Tool

This tool contains a link to our contact email address as listed below.

Please let us know if we can help or how we can improve this web map application.

Contact us here:

GISPlanning@greatersudbury.ca